



# New Haven Reads 10<sup>th</sup> Annual Spelling Bee

Friday, November 5, 2021

7:00 - 8:30 pm

#NHRSpellingBee

[www.newhavenreads.org](http://www.newhavenreads.org)

## Welcome to our 10th Annual Spelling Bee !

New Haven Reads continues to be a bright spot for our families and our community and we could not do it without your help! At the start of the pandemic, we moved our programs online and I am glad to share that we are now offering both in-person and online programs to almost 250 students every week. We could not transform the lives of so many children without the dedicated support of almost 200 community volunteers. Students are reaping educational benefits at a time when educational gaps are widening. We are distributing books through our Book Bank and through other organizations, schools, and food pantries across our region. Together, we are creating a community of readers!

Enormous thanks to everyone who helped us to plan this year's Bee. Special thanks go to Ray Andrewsen, our Emcee this evening, and Shana, our amazing Word Pronouncer. We are likewise very appreciative of our generous sponsors – please check them out and support them as they have supported New Haven Reads.

We hope that you will stay connected with New Haven Reads. Please follow us on social media and we hope you enjoy the Bee this evening and spell well!

Warmly,



Executive Director, New Haven Reads  
[Kirsten@newhavenreads.org](mailto:Kirsten@newhavenreads.org)

### We would like to thank the New Haven Reads Board of Directors for their support for the Spelling Bee

Ruth Beardsley, *President*  
Andy Babiak, *Vice President*  
Alex Kleiner, *Treasurer*  
Laurie Desmet, *Secretary*  
Sigga Benediksdottir  
Margi Bhatt  
Annette Charles  
Ted Cohen  
Omena McCoy

Judith Nacca  
Susan Riggs  
Jodi Benjamin Schneider  
Oscar Suarez  
Stephanie Y. Willis  
Senator Gary Winfield, *Honorary Member*  
Pete Goldsmith, *Honorary Member*  
Kirsten Levinsohn, *Ex Officio*

# William Reese Company

*Americana, Voyages & Travel*  
*Literature, Artwork*  
*Historical & Literary Manuscripts*

Catalogues and topical lists issued frequently.

Current catalogues include:

- 368 LITERARY MISCELLANY
- 369 RECENT ACQUISITIONS IN AMERICANA
- 370 NATURAL HISTORY
- 371 AFRICAN AMERICANA
- 372 MANUSCRIPTS, ARCHIVES & PHOTOGRAPHS

Various e-lists are viewable on our website only.

Want lists are welcome.

409 Temple Street  
New Haven, Connecticut 06511

Phone: (203) 789-8081

Fax: (203) 865-7653

e-mail: [coreese@reeseo.com](mailto:coreese@reeseo.com)

website: [www.williamreeseo.com](http://www.williamreeseo.com)

# Congratulations

## New Haven Reads

on consistently being *recognized* and *appreciated* by our community.

### 2021-2022 AVANGives Community Grant Program -

Reconciliation and Recovery Award

### The Choate Fund for Justice Award -

honoring NHR's "critically important and remarkable work."

### Mentorship Award from the New Haven Board of Alders Black and Hispanic Caucus -

to honor programs and individuals who contribute in extraordinary ways to the New Haven community.

### New Haven Alumnae Chapter of Delta Sigma Theta Sorority - the 2019 Youth Development Community Award.



CAZBEE FUND



## Bee Schedule



- |        |  |
|--------|--|
| 6:30pm | Zoom waiting room will open for participants   |
| 7:00pm | The Bee starts!<br>Welcome and introductions from our Emcee<br>Thank you to our sponsors |
| 7:10pm | Warm up Game - NHR Trivia  |
| 7:15pm | Round 1<br>Break - video from NHR  |
| 7:35pm | Round 2<br>Break - NHR Volunteer Testimonial   |
| 7:55pm | Round 3  |
| 8:15pm | Winners' podium<br>Wrap up and goodbye   |
| 8:30pm | Close  |

All times are approximate.

If you are late to the Bee, you can join in the Kahoot at any time.  
The Kahoot game pin will always be visible on the screen.



# Truly inspiring

Celebrating New Haven Reads commitment to  
building a community of readers.

**Andy Babiak**

Director  
Branch Manager

**UBS Financial Services Inc.**

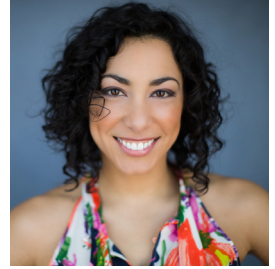
1 Century Tower  
265 Church Street  
6th Floor  
New Haven, CT 06510  
203-562-0700

[ubs.com/branch/newhavenlh](https://ubs.com/branch/newhavenlh)



## **Shana Schneider - Word Pronouncer**

Shana is the founder of Fitstyle by Shana and the creator of the FITS.T.Y.L.E. Your Life™ approach to fitness, which helps you find time for fitness in your everyday life. As a workshop + class leader, fitness educator and author, Shana has been featured in national magazines, websites and fitness blogs and is seen regularly on WTNH News 8. Prior to working on Fitstyle by Shana full time, she worked for over a decade holding several leadership positions at Yale University. She is an AFAA certified group fitness instructor and personal trainer and is licensed to teach Zumba Fitness. Shana holds a B.A. from Yale University and is known for doing leg lifts in line at Starbucks



## **Ray Andrewsen - Emcee**

Ray Andrewsen is the Executive Director of the Quinnipiac Chamber of Commerce and formerly Director of Membership Services for the Greater New Haven Chamber of Commerce engaged in business development, partnerships benefits satisfaction, and community outreach. Previously he had been the General Manager and local morning radio voice on Quinnipiac University's WQUN in Hamden for over 22 years. Ray has interviewed thousands of local and national guests. Under his direction WQUN served over 400 local advertisers, community and government organizations, religious and educational institutions, and non-profit groups every year. It was voted the New Haven area's Best Radio Station as recently as the 2018 CTNow reader's poll. Ray has extensive civic experience having served on the board of directors of the Connecticut Broadcasters Association, Hamden Regional Chamber of Commerce, Christian Community Action, Interfaith Volunteer Caregivers, Schooner Inc, and he is a past PTA president of Ridge Hill elementary school in Hamden. Ray is currently the president of the advisory board of the Salvation Army of New Haven, serves on the board of Clifford Beers Clinic, operations committee of the Ulbrich Boys and Girls Club, member of the New Haven Rotary, and panelist on the Hamden Juvenile Review Board. Ray received the Hamden Citizen of the Year Award from the Hamden Elks, Notable Citizen of the Year Award from the Hamden Chamber of Commerce, Community Impact Award from the Quinnipiac Chamber of Commerce, and the Arnold Dean Award for Connecticut Broadcasting from the Franciscan Life Center in 2019. He has been a regular presence around the area having served as a moderator, interviewer, and emcee at numerous local events.



# BEE RULES



## Set-up

- Play from anywhere with a stable internet connection.
- Play solo or with others in your home. There are no teams.
- The event will be live on Zoom
- You'll need a second device to play (cell, tablet, second screen)
- NHR will record and photograph the Bee

## The Bee

- 3 spelling rounds with 12 words per round.
- Every player remains in the whole game.
- Joining late? No problem. The game PIN will be on screen.
- Prizes will go to the winners of each round and overall winners.

## How to Play

- Players will join the Kahoot! during the event. We will give you all the instructions you need!
- For each word, the Word Pronouncer will say the word, use it in a sentence, and define it.
- Players will see the sentence with a blank for the word and four spelling options.
- There will be 30 seconds per spelling question in which to choose an answer.
- Players will choose one of four spelling options. Answers are locked in and can't be changed.

## How to score

- Each word is worth a maximum of 1,000 points
- Players are rewarded for accuracy and speed
- There is only one correct spelling for each word

## How to win!

- Round Winners have the most points at the end of each round
- The Spelling Bee Champion will have the most points across all 3 rounds

## Don't forget!

- You will need a second device to play. Remove autolock from your second device.
- NHR will host a live practice via Zoom on 11/2 at 8pm



**YALE  
CENTER  
FOR  
BRITISH  
ART**

[britishart.yale.edu](http://britishart.yale.edu)

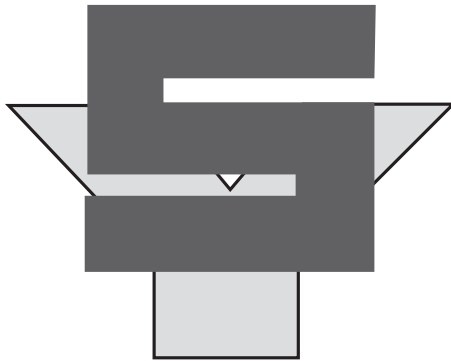
f t i ▶

@yalebritishart

The Center is proud to support  
the mission of New Haven Reads.



Handsome Dan studies a facsimile edition under close supervision. Photo by Bernie Stagers



**York Hill Trap Rock  
L. Suzio Concrete  
L. Suzio Asphalt  
L. Suzio Construction**

**Leading Connecticut Construction since 1898.**

Plants in Meriden, Wallingford, New Haven,  
Milford and Derby

Main Number:  
203-237-8421

Toll Free:  
888-789-4626  
(888-SUZIOCO)

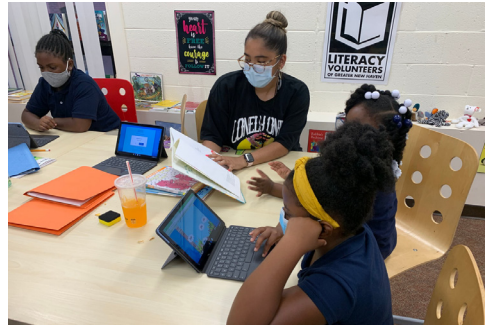
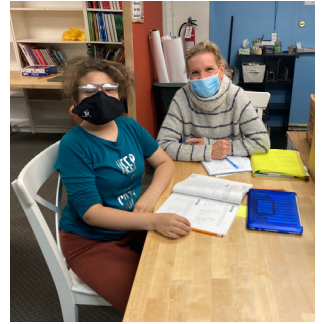
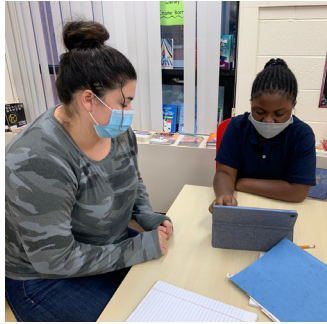


[www.suzioyorkhill.com](http://www.suzioyorkhill.com)



Volunteers are the heart and soul  
of New Haven Reads.

Thank **You** to our amazing volunteers!



For more information about volunteering,  
please go to [www.newhavenreads.org](http://www.newhavenreads.org)

# **We are so grateful for everyone who has helped us make this virtual Bee such a success!**

Thank you to the New Haven Reads Board for their enthusiasm and support for this virtual Bee.

All of the volunteers who helped us to develop the virtual format and helped us to rehearse.

Bombas Socks for their generous donation of socks for tonight's prizes

Swords into Plowshares Honey and Candles for their generous donation of honey as prizes for our winners

Jailene Garzon (NHR alumna) for sharing her design talents with us

All of our sponsors who continue to support the mission and work of New Haven Reads

**THANK YOU!** For supporting the Bee and joining us this evening!



# Yale University



COMMUNITY INVESTMENT



SUPPORT FOR EDUCATION



STRONG NEIGHBORHOODS



BIOTECHNOLOGY START-UPS

- Creating a vital downtown through Yale's community investment program
- Supporting public school education through New Haven Promise
- Strengthening neighborhoods by helping Yale employees buy homes
- Growing New Haven's biotech industry and the local economy

Yale *Contributing to a Strong New Haven* [onha.yale.edu](http://onha.yale.edu)



**is a proud sponsor of New Haven Reads!**



**| Paper | Plastic | Cleaning Supplies |**

19 North George Street, Meriden, CT 06451  
Phone: (203) 235-6391, Fax: (203) 237-4336  
or visit our social channels



**Thank you Russell Hall for  
supporting and sponsoring  
New Haven Reads since 2016!**

**We are forever grateful for  
New Haven Reads!**



*good ingredients for a better world*

1000 Chapel St. New Haven, CT 06510

203.562.3888

[clairescornercopia.com](http://clairescornercopia.com)



fitstyleBY SHANA

**DO YOU WORK AT  
A COMPUTER ALL DAY?  
AND WANT TO FEEL MORE  
ENERGIZED?**

**Learn the FITS.T.Y.L.E. FUNDAMENTALS  
and bring fitness in your everyday life!**

**VIRTUAL WORKSHOPS + CLASSES**

**[fitstylebyshana.com](http://fitstylebyshana.com)**



**NAPPO WEALTH ADVISORY GROUP**  

---

**OF JANNEY MONTGOMERY SCOTT LLC**

**New Haven Reads  
is BEE-utiful**



**Bruce D. Jacobs  
Steven D. Jacobs  
Alison R. Jacobs  
Richard L. Jacobs**

**Stanley A. Jacobs**  
In Memoriam

# Yale New Haven Hospital is all abuzz about New Haven Reads spelling bee

Yale New Haven Hospital has been honored to care for this community for more than 185 years. We are proud to be part of a rich tapestry in which so many organizations work together for the entire community.





**Thank you to the New Haven Reads staff and the wonderful volunteers for all you do!**

Carol Bailey  
Laurie Desmet

## WRITER'S DESK

An Online Writing Classroom



APPLAUDS NEW HAVEN READS FOR BELIEVING IN THE  
POWER OF STORIES TO CHANGE LIVES!



Go to [www.writersdesk.us](http://www.writersdesk.us) to learn more about how great books and stories can turn students into confident thinkers and writers.

# THANK YOU TO OUR SPONSORS!

## Our Gold Sponsors | The Bee-lievers

### Ruth Beardsley and Tom Sansone

Ruth and Tom have been longtime supporters of New Haven Reads. Ruth is a dedicated tutor for several years. She has also served on the New Haven Reads Board of Directors since 2015 and is currently our Board President. The CazBee Fund supports education-oriented nonprofit organizations, courtesy of funds from the estate of Carolyn J. Beardsley.

## Our Silver Sponsors | The Bee's Knees

### William Reese Company

The William Reese Co. is among the leading specialists in the fields of Americana and world travel. It serves a large international clientele of collectors and private and public institutions in the acquisition of and the collection development of rare books and manuscripts. The Company also offers maps, photography, and letters. In addition to Americana, the Company maintains a large and eclectic inventory of literary first editions and antiquarian books of the 18th through 21st centuries. <https://www.williamreesecompany.com/>

### UBS

Your financial life encompasses much more than the current markets. It includes your goals for the future and how you want to live right now. At UBS Financial Services, we will work with you to help you understand how cash flow may impact saving for college and your retirement plans. How credit can work in concert with your portfolio strategy. And how protecting your assets today can preserve your legacy tomorrow. <https://local.ubs.com/new-haven-ct/>

### Suzio-York Hill

For over 110 years, the L. Suzio Companies have been forerunners in high-way and residential/commercial construction and in providing Crushed Trap Rock and Ready-Mix Concrete products to the construction industry in Connecticut. All materials are tailored to the specifications of the job.

<https://www.suzioyorkhill.com/>

### The Russell Hall Company, Inc.

For over 150 years The Russell Hall Co. has operated with the philosophy established by its founder, Russell Hall, to sell honest goods at competitive prices. Located in Meriden, they are the area's premier distributor of wholesale paper and plastic goods as well as cleaning supplies.

<https://www.russellhall.com/>

### Claire's Corner Copia

Claire's Corner Copia is a vegetarian restaurant serving New Haven since 1975. They serve organic, sustainable, kosher, vegan, and gluten-free dishes and are located at 1000 Chapel Street. <https://www.clairecornercopia.com/>

## **Our Silver Sponsors | The Bee's Knees**

### **Yale Center for British Art**

Founded by Paul Mellon (Yale College, Class of 1929), the Yale Center for British Art is the largest museum outside of the United Kingdom devoted to British art. Located in the final building designed by Louis I. Kahn, the Center is a focal point for modernist architecture. It is free and open to all.

<https://britishart.yale.edu/>

## **Our Bronze Sponsors | The Beekeepers**

### **Carol Bailey and Laurie Desmet**

Carol and Laurie are longtime supporters of New Haven Reads. Laurie has served on our board and is currently our secretary. Laurie has been a tutor since 2014 and Carol has also volunteered support for NHR.

### **Nappo Wealth Advisory Group**

At Nappo Wealth Advisory Group, we strive to be the highest standard of success in financial relationships. The measure of our success—and how we differentiate ourselves from other firms—lies in the strength of our relationships with you, supported by a foundation of trust and performance. Putting your financial needs first is at the center of who we are and what we do. <https://advisor.janney.com/nappowealthadvisory/>

### **Yale University Office of New Haven and State Affairs**

The Office of New Haven and State Affairs provides support on economic growth, fiscal impact, public schools, youth, strong neighborhoods, and community outreach in the Greater New Haven area through various community groups, workshops, projects, and performances.

<https://onha.yale.edu/>

### **Writer's Desk**

Writer's Desk, an online writing classroom, is a fun, innovative new approach to online learning. We use great books and stories, rigorous exercises, and expert feedback to teach middle- and high-school students how to find their voice as exceptional writers. Explore the meaning of heroism through our of Mice and Men online course, or personal identity through our Outsiders online course.

### **Yale New Haven Hospital**

Yale-New Haven Hospital is a nationally recognized, 1,541-bed, not-for-profit hospital serving as the primary teaching hospital for the Yale School of Medicine. The hospital's two New Haven-based campuses include Yale-New Haven Children's Hospital, Yale-New Haven Psychiatric Hospital and Smilow Cancer Hospital. YNH's York Street campus and associated ambulatory sites are Magnet-designated by the American Nurses Credentialing Center.

<https://www.ynhh.org/>



Founded to share the joy and power of reading, New Haven Reads partners with the community to provide free one-on-one tutoring, educational family support, and a book bank to empower aspiring readers to master the literacy skills needed to thrive in school and life.

**45 Bristol Street  
New Haven, CT 06511  
(203) 752-1923  
[www.newhavenreads.org](http://www.newhavenreads.org)**

Want to volunteer?  
Contact Natosha at [volunteer@newhavenreads.org](mailto:volunteer@newhavenreads.org)

Looking to donate books?  
Email [books@newhavenreads.org](mailto:books@newhavenreads.org)

Have a general question about our operations?  
Email [information@newhavenreads.org](mailto:information@newhavenreads.org)

**FOLLOW US!**

